

**WAOS**

Staging Musical Theatre in Witham

*noda*

Be inspired by amateur theatre

**BETTY**



**BLUE EYES**

Book by

**RON COWEN & DANIEL LIPMAN**

Music by

**GEORGE STILES**

Lyrics by

**ANTHONY DREWE**

Based on the HANDMADE film "A PRIVATE FUNCTION" and the original story by  
**ALAN BENNET and MALCOLM MOWBRAY**

Adapted from the screenplay by  
**ALAN BENNET**

Originally produced in London by **CAMERON MACKINTOSH**

This amateur production is presented by arrangement with  
Music Theatre International (Europe)  
All authorized performance materials are also supplied by MTI Europe  
[www.mtishows.co.uk](http://www.mtishows.co.uk)

**25<sup>th</sup> - 30<sup>th</sup> April 2022**

**Witham Public Hall**

PLATINUM

# WAOS presents: Betty Blue Eyes



**Stewart Adkins**  
**WAOS President**

Welcome to Shepardsford in post-war austerity Britain, where small-town snobbery and the apparent advantages that social class confers on the elite, come up against resistance from everyone else who insist on "Fair Shares for All". Add in an unlicensed pig, being fattened for the banquet, a zealous meat inspector with no sense of smell and an ambitious piano teacher pushing her husband to climb the social ladder and we have the ingredients for a very funny musical. Its humour is perhaps uniquely British, who can find and create fun in the most unlikely of places. We do hope you enjoy the show and if you do we encourage you to tell your friends and family. Thank you for your support and don't forget that our next show, **The Flames of Injustice**, is one we have commissioned especially for the centenary of the very first show WAOS performed in 1922.

## Creative Team



**Claire Carr**  
**Director & Choreographer**

After the disappointment of having to cancel the last WAOS show she was working on with only 3 weeks to go - that of 'Annie Get Your Gun' in April 2020 due to Covid - Claire is delighted to be back with this fabulously talented society for the enchanting and hilarious 'Betty Blue Eyes'.

Dancing from the age of 3, Claire has been actively involved in dance and musical theatre all her life - After completing a Degree in Dance Studies in London, Claire continued to perform on stage for over 25 years. Since 2016, she now works purely in a creative capacity as Director & Choreographer with numerous societies across Essex in addition to WAOS. Claire also delivers Musical Theatre Dance Classes for adults in Essex, runs Summer Schools for youth groups, and has recently collaborated on the development of a new musical.

Having worked as Director & Choreographer for a number of award-winning WAOS shows in the past Claire has loved being part of the creative team at WAOS once again. 'Betty Blue Eyes' has EVERYTHING - a brilliant story, hilarious eccentric characters

combined with touching heart-warming moments, and the drama and sadness of post-war Britain alongside big show-stopping choreography of the 1940s. Plus 'Betty' the pig herself - adding the cute factor and challenge of working with a puppet!

Claire would like to thank the amazing cast for their hard work and determination through, at times, another difficult rehearsal period. Huge thanks also to the entire Production Team for their unending support and hard work during this process making her vision come to life. Special thanks to her fabulous Assistant, Emma Loring - supported by Alice Mason - and to the brilliant crew, but particularly Donna Goddard and the Props team working with such a huge props list! It has been a delight to work alongside Susannah Edom once again as MD, who has worked the cast meticulously through the beautiful score. We hope you enjoy the show - especially apt in the year we celebrate our wonderful Queens' Jubilee.





**Susannah Edom**  
**Musical Director**

Susannah lives near Witham and is CEO of Attain Multi-Academy Trust, working with many local schools. Susannah works regularly with Barnardo's as conductor for their Young Supporters' Concerts at the Royal Albert Hall, Royal Festival Hall, Barbican and at Wembley. She is also involved with the annual national choral competition as an adjudicator. She continues to work with young people and adults regularly both as a conductor, pianist and adjudicator and is an official accompanist for the Chelmsford Music Festival.

Susannah studied music at Bulmershe College, Reading receiving piano tuition under Eric Parkin and singing in the internationally famous Girls Choir under Gwyn Arch. She also worked as choral specialist at the County Music School which led to involvement in the National Festival of Music for Youth and the Aldeburgh Festival as conductor.

Susannah has wide experience of musical theatre as Musical Director of societies locally. Susannah particularly enjoys working with the members of WAOS and is looking forward to a wonderful production of **Betty Blue Eyes**.



**Emma Loring**  
**Assistant Director**

Emma has been a part of local amateur theatre for the past 12 years. Starting her theatre life at Braintree Musical Society in 2011 and joining WAOS for her first onstage appearance in **Oliver** in 2013.

Emma has assistant directed many times for WAOS; **The Sound of Music** in 2014 and **Fiddler on the Roof** in 2018 and then last year for our post COVID show **Made in Dagenham**. You would normally find her, up on the stage and treading the boards with her fellow WAOS performers, but fancied a change of pace for **Betty Blue Eyes**. Emma was given the opportunity to work alongside Claire and Susannah within rehearsals and has learnt so much over the past 6 months. Emma is looking forward to the time where she will get to Direct a show for WAOS.

The cast and crew have worked tirelessly during the rehearsal process, with COVID still very present in our lives. But the cast and crew have rallied and the **Betty Blue Eyes** is spectacular. She hopes that you enjoy the show, and come back to see us for our homegrown Musical in October - **The Flames of Injustice!**



# Betty Blue Eyes

## Synopsis

A New Musical Comedy, Betty Blue Eyes is an utterly British musical, full of eccentric characters and of course the star, Betty the pig.

Based on the film "A Private Function", the story by Alan Bennett is set in Shepardsford, Yorkshire in 1947. The war is over but, like the rest of the country, it still bears the scars of recent war. Belts are tightened and citizens are told by the Government that there will be a 'fair share for all' in return for surviving Austerity Britain. The only bright spark of hope on the horizon is the impending marriage of Princess Elizabeth and Prince Phillip. We follow the lives of Gilbert & Joyce Chilvers, a Chiropodist and his not to be reckoned with wife. Gilbert inadvertently stumbles across a pig named Betty, who is being illegally reared to ensure the local dignitaries can celebrate the Royal Wedding with a lavish banquet. It leads to a kidnapping of the pig, whilst the sinister Mr Wormold - the Ministry of Food Inspector - tracks Betty down.

This show has everything - gorgeous score to fall in love with, humour, strong acting, eccentric characters, heart-warming moments, the drama of post-war Britain, big show-stopping choreography of the 1940s.

## Creating the Show

This has probably been our most challenging show in the past 20 years to bring to the stage. Casting the show took several weeks longer than normal as the show has a larger number of male parts than we normally cast and we welcome all our new WAOS members to the family. Whilst we were able to book and hold 'in-person' rehearsals as many Covid restrictions were lifted, Covid never-the-less took a massive toll on pretty much all cast, Director, MD and Assistant Director throughout the rehearsal period. The Rehearsal schedule had to be changed almost every week to factor in who was available at the time. Both Director and MD had other events re-scheduled due to Covid, which meant a massive load was placed on Emma, our assistant Director to cover - and many thanks to David Mitchell, Phil Toms and others who stepped in as rehearsal accompanists to keep the music flowing. The props on this show are quite specialist and numerous and have been supplied through many sources. Special thanks go to the Mercury Theatre for Betty the Pig and CAODS for helping fill the gaps.

Despite all odds, once again we think we've created a cracking show full of great characters, with a great story that is resonant of our times, with wonderful songs, a great comedy line and for the first time on stage in Witham, a pig called Betty. Enjoy the show.



**BRIGHT & SONS**

Solicitors

*Local knowledge,  
city expertise*

## Legal services for you, your family & your business

Bright & Sons has been providing advice and guidance to people and businesses throughout Essex and beyond for over 130 years.

Child Law

Conveyancing

Court of Protection

Dispute Resolution

Power of Attorney

Probate

Trusts

Wills

Business Law

Commercial Property

Commercial Disputes

Agricultural and Rural Business

**BRIGHT & SONS**

Solicitors

Witham

01376 512338

Maldon

01621 852323

Tiptree

01621 819019



[enquiries@brightslaw.com](mailto:enquiries@brightslaw.com)

[www.brightslaw.com](http://www.brightslaw.com)

## Cast

### Principals

Gilbert Chilvers  
Joyce Chilvers  
Mother Dear  
Dr. James Swaby  
Henry Allardyce  
Francis Lockwood  
Inspector Wormold  
Betty's Handler  
Mrs. Allardyce  
Veronica Allardyce  
Mrs. Roach  
Mrs. Tillbrook  
Mrs. Lester  
& Princess Elizabeth  
Mrs. Turnbull  
Sergeant Noble  
Nuttall, the Butcher  
Metcalf, the Butcher  
Mrs. Metcalf  
Sutcliffe, the farmer  
Baraclough, the Butcher  
& Arthur Cunliffe  
Mrs. Cunliffe  
Mrs. Lockwood  
Reg Bowen, Handyman  
Prince Philip  
BBC Newscaster

Matt Bacon  
Aimee Hart  
Fiona Bocking  
Stewart Adkins  
David Slater  
Dannii Carr  
Ian Gilbert  
Alison Mason  
Carole Hart  
Poppy Borges-Wilby  
Amy Pryce  
Robyn Gowers  
  
Megan Abbott  
Tracey Hackett  
Joe Geddis  
Matt Waldie  
Richard Herring  
Maevae Borges  
Ben Rolph  
  
Trevor Drury  
Celia Greaves  
Elizabeth Chapman  
Gary Rolph  
Steve Rogers  
Ron Howe

### Dancers

Julie Slater            Dance Captain  
Katie Galley           Kitt (Lionheart dancer)  
Robyn Gowers, Rachel Ings,  
Kathryn Nichols, Amy Pryce

### "Magic Fingers" Trio

Megan Abbott, Tracey Hackett, Amy Pryce

### "Lionheart" Trio

Megan Abbott, Robyn Gowers, Amy Pryce

### Ensemble

Anita Gould, Annette Maguire, Jodie Morris

## Creative & Production Team

Director &            Claire Carr  
Choreographer  
Musical Director    Susannah Edom  
Assistant Director   Emma Loring  
  
Production Mgr       Paul Goddard  
Set                    Paul Lazell  
Stage Manager       Ben Sawyer  
Stage Crew           Graham Green, Dean Hirst,  
                              Dave Hunt, Jeremy Lee,  
                              Keith Radley, Ken Hawkes,  
                              Georgina Sawyer  
  
Sound                   Event Sound & Light  
                              Paul Galley, Jason Fenn, Lee  
                              Waddington  
  
Lighting               Estuary Events  
                              Jeremy Naunton, Constance  
                              Lawton  
  
Follow Spots  
Props Manager       John Rhodes, Jackie Bates  
Props Team           Donna Goddard  
                              Denise Scrivener, Libby  
                              Johnson, Annette Maguire,  
                              Janet Hawkes, Melinda  
                              Saines, Leonie Bradford-Doi  
  
Costumes Manager   Anne Howe  
Wardrobe team       Debbie Stirling, Sue Rogers,  
                              Shelley Moore  
  
Wigs  
Make Up               Patsy Page  
                              Liz Watson, Alice Mason,  
                              Shelley Moore  
  
Prompt                   Janet Hawkes, Rebecca  
                              Loader  
  
Publicity               Emma Loring & cast team  
Photography           Megan Abbott,  
                              Richard McNeill  
  
Programme  
Front of House Mgr   Paul Goddard  
Bar Managers        Kathy Sherlock  
Box Office Mgr        Kath Adkins, Ron Howe  
                              Donna Goddard

## Orchestra

Woodwind            Sandy Tate  
Trumpet               Stephen Hopper  
Trombone             Saffina Frazer-Brown  
Keys                   Emma Nash  
Cello                   Nick Tate  
Bass                    Bevan Firth  
Guitars                Ryan Sharman  
Drums                   Paul Codling  
& Percussion



# Principals



**Matt Bacon**  
**Gilbert Chilvers**

Matt has been no stranger to the stage over the years, but this is his first show with WAOS and also his first live-accompanied musical - normally focusing on plays, this is a step out of his comfort zone, but he's loved taking on this new challenge with us - and his surname is Bacon - perfect!



**Aimee Hart**  
**Joyce Chilvers**

Aimee is thrilled to be back on stage with WAOS, this is her first show since the first lockdown struck. Aimee graduated in 2016 with a BA (Hons) in musical theatre from UCC. Theatre credits include, Whatsername in *American Idiot* with UCC, *Cinderella* in *Cinderella* WAOS. Aimee hopes you enjoy the show.



**Fiona Bocking**  
**Mother Dear**

Fiona has been involved in musical theatre over the last 20 years and this is her second show with WAOS. She is absolutely delighted to be playing the very batty *Mother Dear*. She would like to thank Claire, Emma, Susannah and the fabulous cast for all the hard work and support that they have given her and hopes you will enjoy the show.



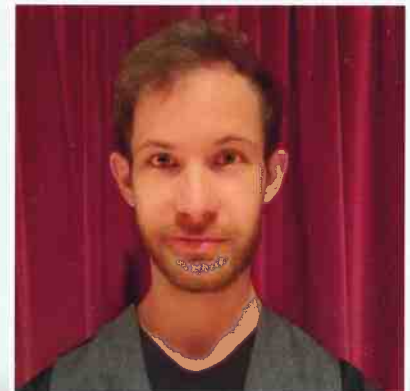
**Stewart Adkins**  
**Dr. James Swaby**

Stewart is delighted to be putting his three years living in Leeds to some practical use - a Yorkshire accent! He is also pleased that this slice of life in a fictional Yorkshire town accommodates people of all ages, (including those of late middle age, such as himself.) He comments, "BBE is a wonderful company show with lots to do for everyone. It's just a shame that I'm getting somewhat typecast as rather unpleasant people. I hope that's not art imitating life."



**David Slater**  
**Henry Allardyce**

David trained at the Guildhall and worked as a professional actor for 25 years. "Betty" is David's fourteenth WAOS production. He's delighted to be performing with wife Julie and daughter Kathryn again. David Co-Directed "*Les Miserables*" for WOW and along with Julie directed WOW's "*Hot Mikado*". Both productions won best musical at the Essex Theatre Guild awards.



**Dannii Carr**  
**Francis Lockwood**

Dannii first joined WAOS back in 2017 for *Forbidden Planet* as a dancer. Since then he has played roles such as Joe in 9-5 and Prince Christopher in *Cinderella*. The part of Lockwood is very different character for him and he is looking forward to getting angry on stage. Grrr



# Principals



**Ian Gilbert**

**Inspector Wormold**

Ian took a nice five year break from performing and has returned this season to play the baddie in this brilliant Musical. Ian can usually be found in the classroom or the radio studio and is thrilled to be making his WAOS debut with a paintbrush in hand! Ian would like to thank the society for being so welcoming and wishes everyone a great week with this hilarious show.



**Alice Mason**

**Betty's Handler**

Alice has been with WAOS since 2015 but has been acting since she was young. Alice is involved with different societies such as KYDS in Tiptree. Alice has had lots of fun with this show, learning a new skill in puppeteering and enjoying the challenge it has been. She hopes you enjoy the show!



**Carole Hart**

**Mrs. Allardyce**

Carole has been singing since childhood and has always had a love of musical theatre. She has been involved in amateur theatre for over 20 years and has played many different roles in plays, pantomimes and musicals including *Footloose*, *Beauty and the Beast*, *Guys and Dolls*, and *Sister Act*



**Poppy Borges-Willby**

**Veronica Allardyce**

This is Poppy's first show with WAOS. This is the first time she has performed in over 3 years and she is thrilled to be back on stage as part of a great production with a wonderful cast. It's especially fun to play a character 10 years younger than herself!



**Amy Pryce**

**Mrs. Roach & Dancer**

Amy is delighted to be back with WAOS, after playing Rita in *Made in Dagenham* in October. She has thoroughly enjoyed harmonising with the trios, and getting her dancing shoes back on! Amy hopes you enjoy the show and have a great evening supporting local theatre.



**Robyn Gowers**

**Mrs. Tillbrook & Dancer**

Robyn has enjoyed playing many roles including Reno Sweeney (*Anything Goes*), Paulette (*Legally Blonde*), Millie (*Thoroughly Modern Millie*) and Nancy (*Oliver!*). Robyn has directed for WAOS in the past (*Oklahoma* 2013 and *Sister Act* 2019) and is thrilled to be involved in *Betty Blue Eyes* with the hugely talented WAOS team.





# Principals



**Megan Abbott**  
**Mrs. Lester**  
& **Princess Elizabeth**

In previous years, Meg loved performing as Margot (Legally Blonde) and Cass (Made in Dagenham). Today you'll see her as Princess Elizabeth & Mrs Lester. You might also spot her as the short one from the Lionheart trio! When she's not on stage, Meg is running her Pet Service "Chasing Squirrels".



**Tracy Hackett**  
**Mrs. Turnbull**

This is the sixth WAOS production that Tracey has taken part in. She joined the Society in 2018 encouraged by her son, Will who takes part in WOW shows and she hasn't looked back. She feels privileged to be a part of the production and hopes you will enjoy the show!



**Joe Geddis**  
**Sergeant Noble**

This is Joe's first show at the Witham Public Hall and is looking forward to 'hamming' it up on his WAOS debut. Joe has played police officers before at the Headgate theatre Colchester but never in a musical. He hopes to hit all the right notes, if not he could face the 'Chop'.



**Matt Waldie**  
**Nuttall, the Butcher**

It's been a rollicking ride northward from Dagenham to Shepardsford. Matthew is looking forward to wearing his butcher's boater and is sure everyone will be able to join in the celebrations in this Jubilee Year. He only hopes Betty manages to behave herself in front of an audience.



**Richard Herring**  
**Metcalf, the Butcher**

Richard grew up not far from Michael Palin, so the accent comes naturally. By a curious coincidence his father was briefly a butcher's apprentice so it seems inevitable that he is now cast as a Yorkshire butcher. ("My secret? The Yorkshire pudding. Serve it first with plenty of gravy, and nobody cares how small the meat rations are.")



**Maeve Borges**  
**Mrs. Metcalf**

This is Maeve's second show with WAOS, following a long association with COS. She is excited to be playing the 'lusty' Mrs Metcalf - sharing the stage for the first time with her daughter Poppy. Maeve plans to be around for a while as WAOS is such a friendly and welcoming society!



# Principals



**Ben Rolph**  
**Sutcliffe, the Farmer**

Ben was a regular WOW! cast member, but has now moved on to his first show with WAOS and is enjoying playing alongside his Dad. He hopes you enjoy the show!



**Trevor Drury**  
**Barracough, the butcher & Arthur Cunliffe**

Trevor has been a member of WAOS for over twenty years. His first show was **The Best Little Whorehouse In Texas**, which was something of a "baptism of fire". Unbeknownst to him when accepting the part, it involved disrobing on stage! It didn't put him off, and he has been involved in many shows, either on stage, or doing visual projections.



**Celia Greaves**  
**Mrs. Cunliffe**

This is Celia's second production with WAOS. She was keen to return after hugely enjoying performing in 'Made in Dagenham'. Celia has previously appeared in a number of shows from Colchester Operatic Society including **Oliver**, **Annie**, **Hairspray** and **42nd Street**. She's looking forward to reliving post-war rationing in **Betty Blue-Eyes**!



**Elizabeth Chapman**  
**Mrs. Lockwood**

Elizabeth's first production with WAOS was in **Spamalot** back in 2016. Since then she has been a regular member of the chorus, is the Membership Secretary and also on the Committee. **Betty Blue Eyes** is her first time in a minor principal role and something she is looking forward to.



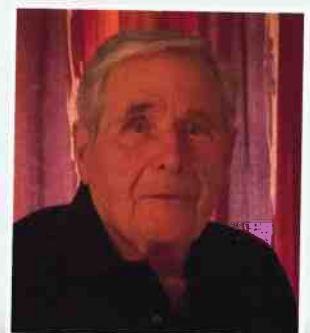
**Gary Rolph**  
**Reg Bowen, Handyman**

Gary has been a part of WAOS for the last 9 years, firstly working back stage for **Oklahoma** in 2013 and taking part in his first show, **Oliver!** in October the same year. He greatly missed taking part in the shows and the social interaction during lock down. He was very excited to be back on stage in **Made in Dagenham** last year and now to be in **Betty Blue Eyes**.



**Steve Rogers**  
**Prince Philip**

Steve is Chairman of WOW!, but is also a regular helper for WAOS behind the scenes somewhere. He is delighted to be treading the boards again, but blink and you'll miss it!



**Ron Howe**  
**BBC Newscaster**

Ron has performed in WAOS shows for almost 60 years and is relishing being involved with **Betty Blue Eyes** that takes him back to his childhood days and the realities of rationing. He hopes you enjoy the show. You will find him in the bar afterwards!



# Dancers & Ensemble



**Julie Slater**  
**Dance Captain**

Julie trained as a professional dancer. She has worked on many WAOS productions including the choreography for *Fiddler on the Roof* and the "Australian" *Pirates*. Julie also choreographed WOW's award-winning "Hot Mikado"; "Oh What a Lovely War" for Witham Drama Club and Chelmsford Trinity productions include "Half a Sixpence", "The Merry Widow" and "Calamity Jane".



**Katie Galley**  
**Kitt & Dancer**

Betty Blue Eyes is Katie's 4th show with WAOS. Katie was a member of WOW! and performed in *Footloose*, *Grease*, *Our House*, *Half a Sixpence* and *Loserville*. She has also performed with *The Fantasticks*, *The Wedding Singer* and *Rock of Ages*. Enjoy the show! #thepigismyfriend



**Rachel Ings**  
**Dancer**

Rachel is no stranger to the stage as she has been dancing since the age of 2 and hasn't stopped since! Before moving to Essex she performed in several shows and *Betty Blue Eyes* will be her 16th show with WAOS. Her dream is to one day be on stage with her 2 daughters!



**Kathryn Nichols**  
**Dancer**

Kathryn has performed in numerous WAOS and CAODS shows. Starting with WAOS as a child in the 80's and returning in 2013 in 'Oliver!'. She's excited to be performing in BBE with her parents and is particularly enjoying the escapism and fun amateur dramatics brings after the birth of her fifth baby.



**Anita Goad**  
**Ensemble**

Anita is the WAOS and WOW Treasurer and a member of the Chorus. This is Anita's 18th show with WAOS 1987 to 1990 then returned in 2014. She said this is one of the funniest to be involved in. Sit back and enjoy and tell your friends what a great time you have had.



**Annette Maguire**  
**Ensemble**

Annette has been a member of WAOS since 2014 when she was a nun in *The Sound of Music*. She enjoys both being on stage or helping backstage often in charge of props. She hopes you enjoy *Betty Blue Eyes* which has been a fun show to do.



**Jodie Morris**  
**Ensemble**

Jodie has been round a while! She joined WOW in 2007 and was in many shows, she then joined WAOS in 2012, her last show was 9 to 5 so she is delighted to be back in rehearsals and back on stage with WAOS after having her son... But will now be taking another break to welcome the next (last!) baby in September!



## Act 1

### Scene 1: The Parade

**Fair Shares for All**.....Company

### Scene 2: Gilberts Patients Houses

**Magic Fingers**.....Mrs.Roach, Mrs.Lester, Mrs.Turnbull, Gilbert

### Scene 3: The Parade

### Scene 4: Metcalf's Butchers Shop

**Magic Fingers (reprise)**..Mrs Metcalf

**Upholding the Law**.....Wormold, Mr.&Mrs. Metcalf, Noble

### Scene 5: Chilvers House

**Nobody part 1**.....Joyce, Dancers

**Nobody part 2**.....Joyce, Mr&Mrs Allardyce, Mr&Mrs Lockwood,  
Veronica, Swaby, Dancers

### Scene 6: Sutcliffe's Farm

**A Private Function**.....Swaby, Allardyce, Lockwood, Sutcliffe

**Betty Blue eyes**.....Allardyce, Gilbert

### Scene 7: The Parade

**The Riot**.....Company

### Scene 8: The Grand Hotel Ballroom

**Lionheart**.....Joyce, Lionheart Trio, Dancers

**There'll be no Lease**.....Gilbert

### Scene 9: The Parade

**Steal the Pig**.....Gilbert, Joyce, Allardyce, Swaby,  
Lockwood & Company

The background of the page is a photograph of a stage set. It features heavy red curtains that are partially drawn to the right, revealing a wooden floor. Above the curtains, a string of blue triangular bunting is strung across the top. The lighting is warm, typical of a stage performance.

## Act 2

### Scene 1: Chilvers House

**Another Little Victory**.....Joyce, Gilbert & Company

**Steal the Pig (Reprise)**..... Joyce

### Scene 2: Outside Chilvers House

**It's an Ill Wind**.....Mrs Tillbrook, Ladies

### Scene 3: Chilvers House

**Pig, No Pig**.....Joyce, Mother Dear, Gilbert

**The kind of Man I am**.....Gilbert

### Scene 4: The King and Crown Pub

**Since the War**.....Swaby, Lockwood, Allardyce, Noble, Wormold

### Scene 5: Chilvers House

**Betty Blue Eyes / Steal the Pig (Reprise)**... Gilbert, Allardyce & Nuttall

**Fair Shares/A Private Function reprise**.... Joyce, Lockwood, Swaby,  
Allardyce, Noble

### Scene 6: The Grand Hotel Ballroom

**Finale Ultimo - Confessions**.... Gilbert, Joyce, Nutall, Mr.&Mrs. Allardyce,  
Swaby, Wormold, Mother Dear & Company

### Scene 7: The Parade

**Magic Fingers (reprise)**..... Joyce & Gilbert

**Finale**..... Company

# Rehearsals



# Rehearsals



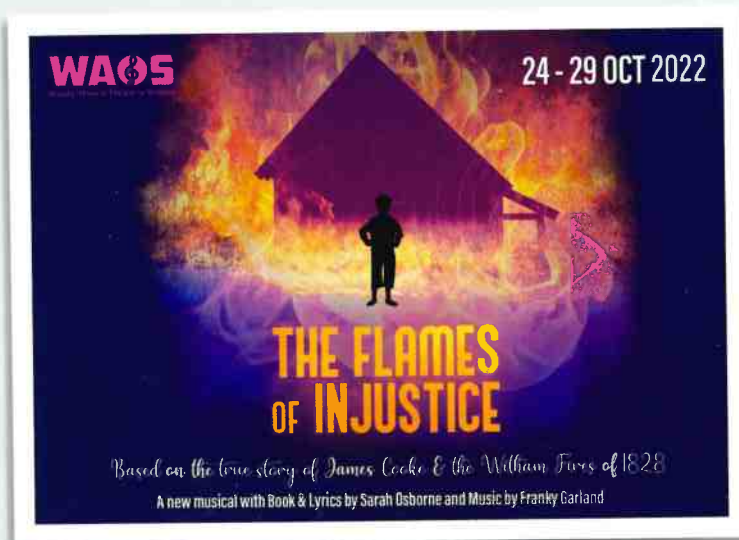
# WAOS

Staging Musical Theatre in Witham

## WAOS and WOW!

In 1995 we established our junior partner - Witham Operatic Workshop (WOW!) for a younger cast and audience. WAOS and WOW! are frequent award winners (see opposite page) and always put on a great show for our audiences and cast alike. WOW! is a renowned group in its own right, with cast members aged from 11 up to 21. WAOS often use WOW! members for the young roles in WAOS performances. You won't be surprised to hear that a number of former WOW! members and cast have appeared in the West End - in shows such as *42nd Street*, *Sunny Afternoon*, *Les Miserables*, *Phantom of the Opera* and *The Book of Mormon*.

## Next Show - THE FLAMES of INJUSTICE



WAOS have been staging shows since 1922 and to celebrate our centenary, we have written our own show, based on the real events from Witham's past involving James Cooke, Olivers Farms and the 'Witham Fires'. Join WAOS as we celebrate our centenary with a brand-new musical drama based on true events.

Bonfire night, November 1828, and the people of Witham revel in celebrations until fires break out at Olivers and other local farms. Unbeknown to sweethearts James Cook & Betty Goodwin, the flames are about to change their lives forever.

When James is wrongly accused of starting the fires, Betty and the community rally round to provide support. Will justice prevail? Will the interrogators listen to reason? And when will the flames burn out?

This moving story has been written by Sarah Osborne in collaboration with WAOS members with a full folk style score by Franky Garland and orchestration by Phil Toms.

We will have an open evening on Wednesday, May 11th at Witham Public Hall from 7:30 where you meet the Director and MD and find out our plans for the show. Come along and join in!

## Sign up for our email list

To receive information about our shows, sign up for our mailing list. Point your smart-phone camera at the square box and follow the link to sign up.





# WAOS

Staging Musical Theatre in Witham

## Would you like to get involved?

As you may realise, there's a lot going on behind the scenes before, during and after the shows. If you'd like to get involved with a really friendly team - and get some experience in an area you'd like to know more about - there are always opportunities for volunteers to help out back-stage; with props; costumes; lighting; sound; staging; photography; publishing; publicity; videography, Front-of-House, the bar - it's a long list! Contact us via our website at [WWW.WAOS.ORG](http://WWW.WAOS.ORG) or come and chat with us after the show.

## Get in Touch



Website : [www.WAOS.ORG](http://www.WAOS.ORG)



Twitter: [@WithamAOS](https://twitter.com/WithamAOS)



Facebook: [www.FACEBOOK.COM/WithamAOS](http://www.FACEBOOK.COM/WithamAOS)

## Friends of WAOS

Kath Adams	Rosemary Chaplin	Graham Green	Helene Jones	Pat Slugocki
Pat Adams	Alma Clarke	John Gunson	Alison Lawfield	Cynthia Stead
Kath Adkins	Norman Clarke	Janet Hawkes	Muriel Loveridge	Kate Stevenson
Stewart Adkins	Tim Clarke	Janice Hawkes	Keith Radley	Richard Wash
Jim Briggs	Peter Crane	Anne Howe	Steve Rogers	Colin Watson
Pat Briggs	Peter Curtis	Ron Howe	Sue Rogers	Liz Watson
Sally Carpenter	Kate Dawson	Marea Irving	Anne Sheppard	Ed Willcox
Bill Chaplin	Cynthia Draper	Michelle Jesse	Tim Sheppard	Jim Wilson
				Sarah Wilson

## WAOS Committee

President	Stewart Adkins
Chair	Trevor Drury
Treasurer	Anita Goold
Secretary	Matthew Waldie
Production Manager	Paul Goddard
Business Manager	Trevor Drury
Social & Publicity Sec.	Emma Loring
Hon. Membership Sec.	Liz Chapman
Stage Manager	Ben Sawyer
Exec Committee Member	Annette Maguire
Exec Committee Member	Justice Ephgrave

General Enquiries : [Secretary@waos.org](mailto:Secretary@waos.org)

## Honorary Life Members

Kath Adams	Kath Adkins
Stewart Adkins	Pat Briggs
Cynthia Draper	Graham Green
John Gunson	Janice Hawkes
Janet Hawkes	Anne Howe
Ron Howe	Helene Jones
Alison Lawfield	Patsy Page
Keith Radley	Anne Sheppard
Tim Sheppard	Cynthia Stead
Liz Watson	



WAOS is proud to be affiliated with the National Operatic and Dramatic Association (NODA), membership no. 3108. NODA was founded in 1899 "to protect and advance the interests of operatic and dramatic art, and of societies engaged therein" and is the leading representative body for amateur theatre groups with over 2,000 society members staging musicals, operas, plays concerts and pantomimes in venues ranging from the country's leading professional theatres to village halls.

NODA offers members resources and services including residential summer schools; documents on safety for productions; workshops, conferencing and networking opportunities and gives members access to general information about laws and best practice.

WAOS NODA awards include best musical for **The Addams Family** and **A Funny Thing Happened on the Way to the Forum**. More recently, **Return to the Forbidden Planet** won best technical achievement, **Cinderella** was nominated for best musical and **Sister Act** won best musical and production. **Made in Dagenham** won best show, best production and best programme awards.

<https://www.noda.org.uk/>

---

## NETG – North Essex Theatre Guild

WAOS is also a long-standing member of NETG - the North Essex Theatre Guild. NETG aim to help amateur dramatic groups in Essex by adjudicating shows to give professional comments and feedback and host an annual awards evening to credit exceptional performances throughout the year.

WAOS have won NETG awards on many occasions, including :-

- |                                       |  |
|---------------------------------------|--|
| <b>Kiss Me Kate</b>                   | - Adjudicators award: Chorography & Dancing  |
| <b>Oklahoma</b>                       | - Best Musical. Stewart Adkins: Best Supporting Actor                                  |
| <b>Oliver!</b>                        | - Timmins award for music  |
| <b>Jack the Ripper</b>                | - David Slater: Best Actor   |
| <b>The Sound of Music</b>             | - Corrina Wilson: Best Actress. Julie Codling: Best Supporting actress                 |
| <b>The Addams Family</b>              | - Corrina Wilson: Best Actress. The King Costume award                                 |
| <b>The Producers</b>                  | - David Slater: Best Actor   |
| <b>Spamalot</b>                       | - Best Musical. Constance Lawton: Best Actress<br>- Harry Tunningley: Best Young Actor |
| <b>Return to the Forbidden Planet</b> | - Harry Tunningley: Best Young Actor   |
| <b>Fiddler on the Roof</b>            | - John Davies : Best Actor   |
| <b>Cinderella</b>                     | - Best Musical   |
| <b>Sister Act</b>                     | - Best Musical   |
| <b>Ron Howe</b>                       | - Jan King award for outstanding work for WAOS & WOW!                                  |



# Acknowledgements & Thanks

- Spring Lodge and Witham Public Hall for use of their rehearsal facilities
- The Railway Tavern, Witham Public Hall, AEGON and Andrew Wood for allowing us to display banners and boards
- Witham Tourist Information Centre & Witham Library for permission to display posters
- The Mercury Theatre for Betty the Pig and specialist props
- CAODS and Ingatestone Musical and Operetta Group for loan of additional props
- The cast for help with props and costumes
- Our Front-of-House volunteer Ushers and Refreshments staff
- Essex Community First Aid Volunteers for providing first aid cover at all our shows
- Our Bar Staff volunteers: Steve, Paul, Rhi and Gemma
- Our Rehearsal accompanists: David Mitchell, Phil Toms and Emma Firth
- Holts Butchers, Witham for the photo-shoot location
- Rob Jelly at BBC Radio Essex, Ovation Radio and Chelmer Radio for interviews
- Witham Mayor Angela Kilmartin for supporting WAOS as one of her charities of the year



## ESTUARY EVENTS

- Corporate events
- Event management
- Design and production
- Technical installations
- Equipment hire

Phone: 07802687468 Email: [info@estuary.events](mailto:info@estuary.events) Web: [estuary.events](http://estuary.events)

*Lighting for Betty Blue Eyes*

# EL PULPO

SPANISH RESTAURANT & TAPAS BAR

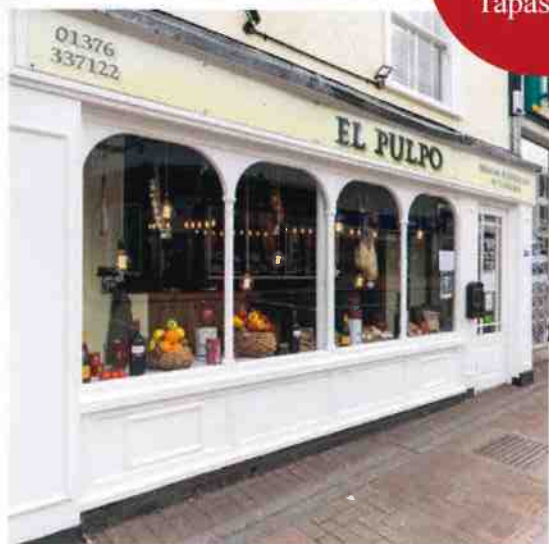
\* 01376 337122 \*

*Opened in September 2016,  
El Pulpo is an authentic  
Spanish Restaurant &  
Tapas Bar located in  
Witham High Street*



*Whether you're looking for a drink  
at our Spanish Bar with Tapas or  
a sit down meal, you will not  
be disappointed with our authentic  
Spanish fresh to order food*

Pre-Theatre  
offer. Any 3  
Tapas £16



*Walk-ins encouraged however, if you wish to  
make a booking, please contact us:*

*Phone: 01376 337122 | Email: [infor@elpulpo.co.uk](mailto:infor@elpulpo.co.uk)*

*Web: [www.elpulpo.co.uk](http://www.elpulpo.co.uk)*

*El Pulpo, 33 Newland Street, Witham CM8 2AF*

*Open 7 Days a week*



**Concert & Tours**



**Architectural Lighting**



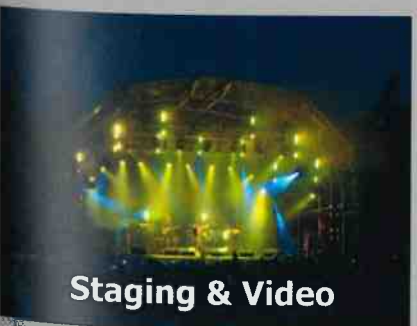
**Corporate Events**



**Theatrical Productions**



**Special Events**



**Staging & Video**



**event**  
sound & light

hire · sales · install · events

## Supporting “Betty Blue Eyes”

- Sound Equipment
- Lighting Equipment
- Concerts
- Architectural Lighting
- Nightclub & Disco Equipment
- Conferences
- Theatre
- Staging
- Public Address Systems
- Power Distribution
- Effects Equipment
- Trussing Systems
- Product Launches
- AV Equipment
- Event Management
- Background Music Systems

**01245 863 863**

[sales@eventsoundandlight.com](mailto:sales@eventsoundandlight.com)

[www.eventsoundandlight.com](http://www.eventsoundandlight.com)

event sound & light Ltd  
Unit 2, Warren Estate,  
Lordship Road, Writtle,  
Chelmsford, Essex. CM1 3WT.



[eventsoundandlight.com](http://eventsoundandlight.com)



## Welcome to Lian

We have been serving Chinese food for over two decades and pride ourselves on creating dishes prepared with exacting care using only the finest produce available. Our menu includes such diverse inspiration as Pekinese, Szechuan and Malaysian cuisine. The Lian team are always delighted to discuss the menu with you and recommend a compatible wine from our cellars.

### **Opening Times**

**Closed Every Monday**

**Tuesday - Sunday**

Lunch Service: 12pm Until 2:30pm

Dinner Service: 5:30pm - 10:30pm

### **Takeaway Menu**

PLEASE NOTE THAT OUR  
TAKEAWAY MENU IS  
COLLECTION ONLY

Order online and collect  
your food 30 minutes later.

### **Contact Us**

Lian Restaurant  
5 Newland Street  
Witham

Essex  
CM8 2AF

T: 01376 510684

E: [info@lianwitham.com](mailto:info@lianwitham.com)

W: [www.lianwitham.com](http://www.lianwitham.com)

# MAKE YOUR DREAM HOME A REALITY

With SEH BAC an award winning company you can trust

UP TO  
**40% OFF\***  
WINDOWS • DOORS  
CONSERVATORIES  
& EXTENSIONS



**WINDOWS • DOORS • CONSERVATORIES • EXTENSIONS**

**Visit your nearest showcentre today**

2 Baynes Place, Waterhouse Lane, Chelmsford, Essex, CM1 2QX

**Get your quote online [www.sehbac.com](http://www.sehbac.com)**

**or over the phone 0800 666 444**



**Where your home matters**

**WINDOWS • DOORS • CONSERVATORIES • EXTENSIONS**



\*Up to 40% OFF Windows, Doors, Conservatories and Extensions, no minimum spend. Terms and conditions apply, please ask for more information. Offer ends 30th April 2022. \*\*An expert panel of independent judges named SEH BAC as the G-17 Installer of the Year, the highest accolade for any installer in the UK and the best of 13,000 home improvement companies. ♦ As part of One Group Construction.



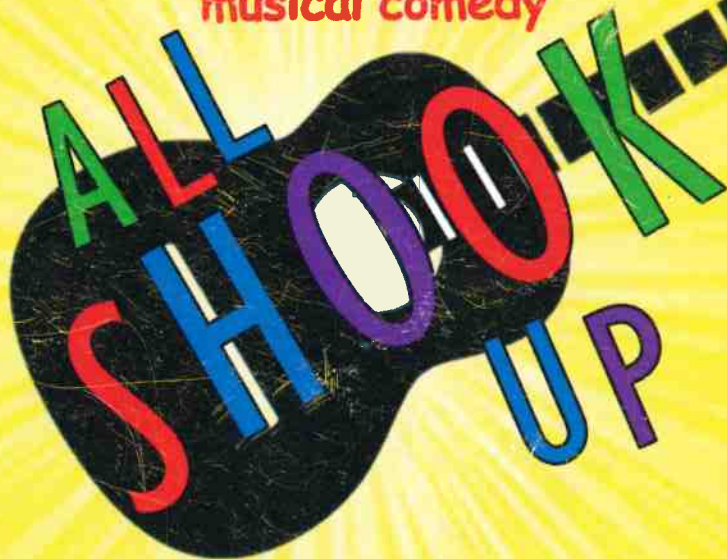
# THE FLAMES OF INJUSTICE

*Based on the true story of James Cooke & the Witham Fires of 1828*

A new musical with Book & Lyrics by Sarah Osborne and Music by Franky Garland

**WOW!**

The rock 'n' roll  
musical comedy



**Additional  
Information  
Coming Soon**  
[www.WOW.org.uk](http://www.WOW.org.uk)

**February 13<sup>th</sup> to 18<sup>th</sup> 2023**