



TALISMAN TRAVEL LTD.

**THE WORLD AT YOUR FINGERTIP**

66 High Street, Witham, Essex CM8 1AH  
Tel: Witham 517522 Telex 987926 EBC G

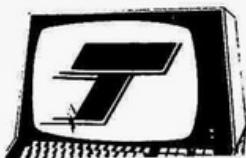


ATOL No. 8378.



**WORLD-WIDE  
TRAVEL AGENTS**

**SWITCH TO TALISMAN'S SIMULTANEOUS  
COMPUTER LINK RESERVATION SYSTEM**



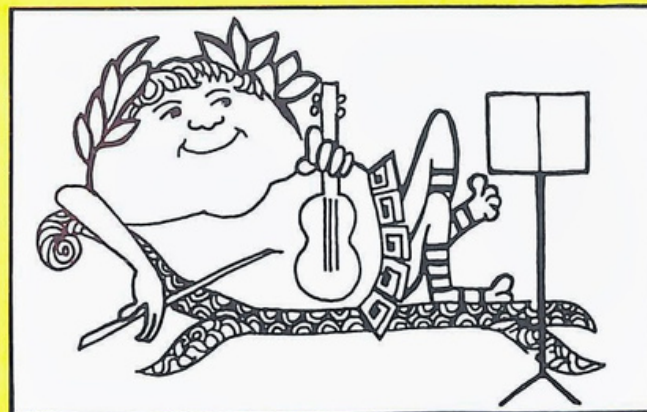
**Head Office:**

Talisman House, 330 Holloway Road, London N7 6NJ  
Tel: 01-607 2245 & 01-607 8653 Telex: 23411 Talis G

**Branches at:**

Holiday Inn, Swiss Cottage, Holiday Inn, Marble Arch  
Holiday Inn, Chelsea, Crouch End, Westminster, Witham  
& Strasbourg

**YOUR HELPFUL TRAVEL AGENT**



**Witham  
Musical  
& Amateur  
Operatic  
Society**

**ORPHEUS**

**IN THE**

**UNDERWORLD**



**PROGRAMME 20p**



## LORD RAYLEIGH'S FARMS

*Fine herds of pedigree cows graze in our tranquil meadows or gather snug in warm cowsheds, but it still needs generations of Lord Rayleigh's know-how to put their fresh milk and cream on to your doorstep.*

*Witham Operatic Society could not transform poor music into a joyous occasion but combine fine music with their know-how and you have a treat in store.*

*So, we'll sing you a song if you wish but we think you'll prefer our milk.*

**CHELMSFORD 380267**



WITHAM MUSICAL AND AMATEUR OPERATIC SOCIETY  
(AFFILIATED TO THE NATIONAL OPERATIC AND DRAMATIC ASSOCIATION)



Inaugurated 1921

*presents*

# ORPHEUS IN THE UNDERWORLD

A Comic Operetta in Three Acts  
from the original by  
H. Cremieux and L. Halevy  
New Book and Lyrics by  
Phil Park

Music by  
JACQUES OFFENBACH  
Music Adapted and Arranged by  
Ronald Hamner  
(by arrangement with Josef Weinberger Ltd.)

PRODUCER	DEREK COLLINS
MUSICAL DIRECTOR	KEN FERRIS
CHOREOGRAPHER	CYNTHIA STEAD

THE PUBLIC HALL, WITHAM  
**28th APRIL — 3rd MAY, 1980**  
Monday to Saturday : 7.45p.m.  
Saturday Matinee : 4.00p.m.

COME AND JOIN OUR CLUB  
AT

# THE SUNDAY MARKET

9a.m.-2p.m. throughout the year  
off the MALDON ROAD, WITHAM  
behind the Garden Centre

A WIDE SELECTION OF BARGAINS

Annual subscription to the WITHAM RECREATIONAL FACILITIES CLUB is only 10p and you will save more than this on your first purchase! The net subscription income is donated to Witham social activities.

THERE WILL ALSO BE

# A MONDAY MARKET

open to the public  
9a.m.-2p.m.  
at the same place under the same management  
on the following days

7th APRIL 1980      Easter Monday  
5th MAY 1980        May Day Holiday  
26th MAY 1980      Spring Holiday Monday  
25th AUGUST 1980    Late Summer Holiday Monday

## A MESSAGE FROM THE PRESIDENT

Orpheus in the Underworld, first performed in 1858, can be appreciated on three levels. As a period piece it reflects the radiant gaiety of the Paris of the Second Empire. Next it illustrates how easily public opinion of the time was shocked, as it was by this audacious distortion of a respected Greek legend which almost amounted to blasphemy. While appearing to deride antiquity it actually satirised contemporary Paris and its morals. Finally, we can enjoy the eternal quality of wit and freshness which ensures that this sparkling operetta will never go for long unperformed.



## FOR YOUR LEADING LADY

NINA RICCI  
'L'air du Temps'  
'Capricci' 'Farouche'

CHARLES OF THE RITZ  
'Ritz' 'Enigma'

GUCCI  
'Parfum I'  
CARVEN  
'Ma Griffe'

CHRISTIAN DIOR  
'Miss Dior' 'Diorella'  
'Dior-Dior' 'Diorissimo'

YVES St LAURENT  
'Opium' 'Y'  
'Rive Gauche'

CLASSIC PERFUMES from  
STOFFER & HUNTER, Newland Street, Witham

**SERVICE TO YOU THE MOTORIST**  
FULL REPAIR & SERVICE FACILITIES  
CRYPTON TUNING — UNDERSEALING  
ELECTRONIC WHEEL BALANCING  
ROOF RACKS & HOLIDAY KITS FOR HIRE  
CAR RADIOS & STEREO

Comprehensive LEYLAND SPARE PARTS STOCKIST

EFFICIENT FORECOURT SERVICE

## HURRELL & BEARDWELL

Limited

The Grove Garage  
and  
Templars Service Station  
WITHAM

Witham 513272/3

**MORRIS — AUSTIN DEALERS**  
ALSO ANY MAKE OF NEW CAR SUPPLIED

*Guaranteed Used Cars*

Insurance and Hire Purchase Arranged

GENEROUS PART EXCHANGE ALLOWANCES

**SERVICE WITH CIVILITY**



Patsy Doy  
**Eurydice**



Derek Collins  
**Jupiter**



Nicholas Clough  
**Pluto**

### PRODUCER

**DEREK COLLINS, A.L.A.M.** Born of mixed parents in Swansea before the War (2nd!). Started as a boy soprano aged 11. Theatrical career embraced radio, T.V., plus stage appearances from Oratorio to Pantomime. Married to Janet (Juno), has three sons and a daughter. Weakness for taking Gilbert and Sullivan productions to Ireland, where, at the Waterford International Festival of Light Opera, he twice won the award for Best Amateur Producer two years in succession.

### MUSICAL DIRECTOR

**KEN FERRIS** began his professional career as a chorister at Westminster Abbey. At Cambridge University he was a member of the fabulous "Footlights" for four years, being Musical Director for two of them. Also a jazz musician, playing at venues as far afield as India, Switzerland and Colchester, besides appearing in and playing for Cabaret. Tonight he takes it easy, waving the baton.

### CHOREOGRAPHER

**CYNTHIA STEAD**, a professional dancer, now retired from the West End stage to look after her husband and family in Wickham Bishops. Entertains with the Society's Music Hall group with fine wit and humour. Cynthia shrinks immediately a "credit" in the programme is mentioned but we should like to mention her personality and expertise in teaching us all a little of what she knows in a very enjoyable way.

## PREVIOUS PRODUCTIONS OF THE SOCIETY

1922	H.M.S. Pinafore	1964	The New Moon
1923	The Pirates of Penzance		The Mikado (CV)
1924	Ruddigore	1965	The Maid of the Mountains
1925	Patience		The Pirates of Penzance (CV)
1926	The Yeomen of the Guard	1966	Gypsy Love
1927	Dorothy		H.M.S. Pinafore (CV)
1928	Les Cloches de Corneville	1967	Call Me Madam
1929	The Mikado		Iolanthe (CV)
1930	The Gondoliers	1968	The Desert Song
1931	Falka		Patience (CV)
1932	H.M.S. Pinafore	1969	Rose Marie
1933	Merrie England		The Mikado
1934	Tom Jones	1970	Free As Air
1935	The Geisha		The Pirates of Penzance
1936	Dorothy	1971	Oklahoma!
1937	The Maid of the Mountains		Trial by Jury
1938	The Street Singer		H.M.S. Pinafore
1939	Goodnight Vienna	1972	The Merry Widow
1947	Miss Hook of Halland		The Gondoliers
1948	Maritza	1973	Carousel
1949	Katinka		Iolanthe
1950	The Lilac Domino	1974	The Pajama Game
1951	Rio Rita		The Yeomen of the Guard
1952	Wild Violets	1975	Pink Champagne
1953	Magyar Melody		Patience
1954	Carissima	1976	South Pacific
1955	Rose Marie		Ruddigore
1956	Tulip Time	1977	Guys & Dolls
1957	White Horse Inn		Utopia Ltd.
1958	Gypsy Princess	1978	White Horse Inn
1959	The Merry Widow		Mikado
1960	Bless the Bride	1979	Brigadoon
1961	The Boy Friend		Princess Ida
1962	Grab Me A Gondola		
1963	The Quaker Girl		

## THE STORY

Travel back with us to unspecified Ancient Times –

ORPHEUS and EURYDICE, whose marriage was a mistake anyway, have agreed to differ. He will go his way – with the pretty Amaryllis – whilst she will be free to make sheep's eyes at ARISTAEUS (a wolf in shepherd's clothing, if there ever was one). ORPHEUS has heard from the Oracle at Delphi that ARISTAEUS will be in terrible danger if he ventures into the cornfield at the bottom of the garden. EURYDICE investigates and is horrified to find it alive with serpents – mainly vehemently vicious, voraciously virulent and violently venomous vipers. She warns ARISTAEUS but he, unperturbed, rushes madly with EURYDICE into the cornfield. Once there, he reveals himself as PLUTO, King of the Underworld (and immune to snakebites – but you knew that, didn't you!). EURYDICE, however, falls victim to a load of cobras, but once bitten is far from shy! Happily, she dies and with PLUTO goes to Hell. ORPHEUS is delighted – after all she's been nothing but trouble and he really deserved better. Not so CALLIOPE, his Mum, who insists that he complains to JUPITER. After a tearful farewell to his pupils, he leaves with CALLIOPE in a new balloon, piloted by ICARUS, for the distant summit of Mount Olympus.

On Olympus, it is almost dawn and the gods are sleeping, watched over by JUPITER, who, although a bit of a D.O.M. himself, is appalled at the promiscuous and unruly behaviour of his offspring – several of whom are just returning after a night on the tiles. Just after dawn, MERCURY arrives with news of EURYDICE's abduction and is at once despatched to Hades to fetch PLUTO. Meanwhile, ORPHEUS and CALLIOPE are floating towards Olympus. In due course, PLUTO arrives and the gods and goddesses are dismissed whilst he is taken to task by JUPITER and JUNO. The gods and goddesses decide to revolt and return to confront JUPITER with *his* amorous adventures but are interrupted by the arrival of the balloon. ORPHEUS eventually persuades JUPITER to go to Hades and restore EURYDICE to him.

In Hades, EURYDICE is bored – she's still waiting for her introductory orgy and has been left alone with her attendant, STYX – as pleasant a chap as you could ever wish to meet. PLUTO returns with his guests and EURYDICE is locked in her boudoir. As PLUTO goes off to attend to party arrangements, JUPITER (with CUPID's help) sees EURYDICE, is captivated, and woos her in one of his many disguises.

The party begins and EURYDICE is attracted to BACCHUS, much to the chagrin of PLUTO and JUPITER. Eventually, ORPHEUS (and Mum – as usual) appear and remind JUPITER of his promise to return EURYDICE. JUPITER agrees that EURYDICE should return to earth, but ORPHEUS must not look round as he leads her away. All goes well until JUPITER realising he's about to lose EURYDICE, prods ORPHEUS with his sceptre, making him look back. So, he loses EURYDICE and she is claimed by both PLUTO and JUPITER. A problem – who shall be her lover? She is allowed to choose and chooses . . . well, wait and see!

Telephone WITHAM 512131

# THE SPREAD EAGLE HOTEL

## Witham, Essex

*Luncheons and Dinners*  
*First Class A La Carte Restaurant*  
*We cater for all functions*

Under personal supervision of mine hosts  
 Mr. and Mrs. TERRY WEDDELL  
 DAVID and SHELAGH TURNER

Car Park

AA and RAC recommended

北京楼

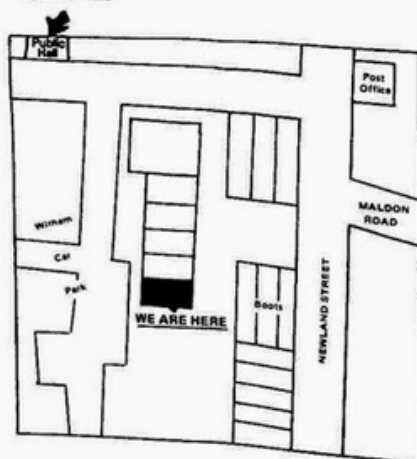
# PEKING CHINESE RESTAURANT

16, NEWLANDS PRECINCT, WITHAM

Telephone: 511049

Opening Hours:  
 Mon. - Thurs. 12 noon - 2.00  
 5.00 - 11.30  
 Friday & Saturday 12 noon - 12.00  
 Sunday 5.00 - 12.00

YOU ARE HERE



*To complete your evening,  
 why not have an after show meal  
 at our Restaurant,  
 or perhaps,  
 take one home for the babysitter?*

## THE MUSIC

					<b>Act I</b>	
Overture ... ..	...	...	...	...	Orchestra	
Opening - Shepherds' Hey	...	...	...	...	Calliope and Chorus	
A Nymph in Love ..	...	...	...	...	Eurydice	
The Violin Duet ... ..	...	...	...	...	Orpheus and Eurydice	
A Shepherd Am I ... ..	...	...	...	...	Pluto (as Aristaeus)	
Mortals Below, Gods Up Above	...	...	...	...	Eurydice, Pluto and Chorus	
Invocation ..	...	...	...	...	Eurydice and Chorus	
Finale ... ..	...	...	...	...	Orpheus, Calliope, Pupils and Chorus	
					<b>Act II</b>	
Lament for Actaeon	...	...	...	...	Diana, Venus, Jupiter and Chorus	
The Balloon Song...	...	...	...	...	Orpheus, Calliope and Icarus	
Nothing We Can Do	...	...	...	...	Jupiter, Pluto and Juno	
To Arms ... ..	...	...	...	...	Ensemble	
Ha Ha Ha ... ..	...	...	...	...	Mars, Cupid, Diana, Venus and Chorus	
Finale ... ..	...	...	...	...	Ensemble	
					<b>Act III</b>	
Sorry I Came ... ..	...	...	...	...	Eurydice	
I Was A King ... ..	...	...	...	...	Styx	
Cherchez la Femme	...	...	...	...	Pluto, Jupiter, Mercury, Mars and Styx	
The Fly Duet ... ..	...	...	...	...	Eurydice and Jupiter	
The Hades Chorus	...	...	...	...	Ensemble	
Reprise: Mortals Below	...	...	...	...	Eurydice and Chorus	
Minuet ... ..	...	...	...	...	Jupiter, Pluto and Chorus	
Galop ... ..	...	...	...	...	Chorus and Dancers	
Finale ... ..	...	...	...	...	Company	

## E. Bixby & Co. Ltd

GOLDSMITHS  
 &  
 SILVERSMITHS

15 Newland Street,  
 Witham.

SELECTION OF RINGS,  
 WATCHES, CLOCKS AND  
 MANY GIFTS.

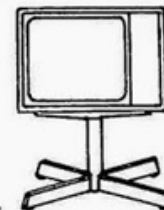
Branches at:-  
 Ilford and East Ham.

## E. G. Coates & Son

126 HIGH STREET, WITHAM  
 Tel: 513339

*For Colour Rental  
 Monochrome Rental*

Large Stocks of  
 Portable T.V.s  
 Fridges  
 & Freezers



Fishing Tackle, Toys & Sports Goods  
 at 16 Church Street, Witham  
 Tel: 512255

# Come and visit the largest Carpet Centre in Essex



## Ramsden Mills

Hundreds of rolls of carpets on display for you to see and feel—  
don't buy from pattern books  
—buy from stock and save time, save petrol — MOST OF ALL SAVE MONEY!

ALL GRADES  
from Bedroom  
to  
Heavy Domestic

5 LARGE WAREHOUSES  
to walk round and make  
your selection

A WIDE CHOICE  
of colours and  
patterns to choose  
from

ALL OUR LOW PRICES  
are V.A.T. inclusive and  
remember! the lower the  
price the lower the V.A.T.

ANY CARPET IN  
STOCK CAN BE FITTED  
WITHIN SEVEN DAYS



LARGE  
DRIVE-IN  
CAR PARK

FITTING SERVICE  
AVAILABLE

OPPOSITE WITHAM  
RAILWAY STATION

Telephone:  
WITHAM 514211

OPENING HOURS  
9.00-1.00 to 2.00-5.30  
MONDAY to FRIDAY  
ALL DAY SATURDAY  
LATE NIGHT FRIDAY  
UNTIL 8.00

## ORCHESTRA

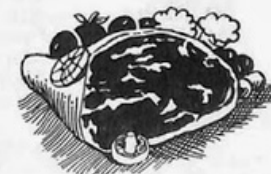
Leader:	Graham Snelling	1st Clarinet:	Susan Ferris
1st Violin:	Roger Bone	2nd Clarinet:	Jennifer Sterling
2nd Violin:	Keith Radley Peter Belsham	Oboe:	Max Sainsbury
Viola:	Nita Boness	Bassoon:	Ken Steward
Cello:	John McMaster	1st Trumpet:	Steve Graham
Double Bass:	Stan Smith	2nd Trumpet:	Paul Ferris
Flute:	Mary Caughey	Trombone:	Les Finan
		Horn:	Jeremy Bailey
		Percussion:	Sid Cooper

# A. ROSS

HIGH CLASS  
BUTCHERS AND FISHMONGERS

*Specialists in orders for deep freezing*

2 MALDON ROAD, WITHAM  
Tel: 514622





Established 1924



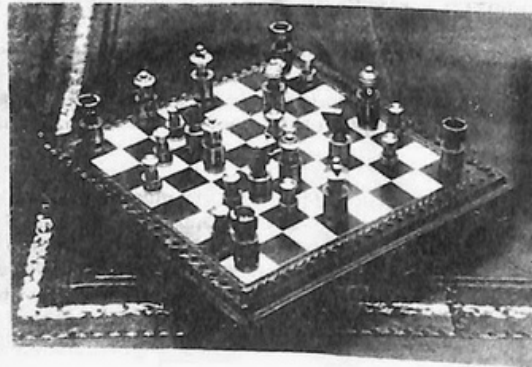
Let

# BALCH

98 NEWLAND STREET  
WITHAM

Tele: WITHAM 513381

*help you with your next move*



We can offer you a service in the sale of all types of  
Residential Properties, Building Land and  
Commercial and Industrial Premises

*Structural surveys carried out promptly and efficiently  
by qualified Chartered Surveyors*

VALUATIONS FOR ALL PURPOSES

## NEWCOMERS TO THE PRODUCTION

### LARA BARBER (Diana)

Lara was born in London in 1954. After schooling in Ealing, and College in Nottingham, she entered teaching in 1975 and is at present in Bramston School, Witham. From the age of five she has been involved in dance and won her first National competition at the age of 7. Among her more recent roles have been appearances with the Hornsey Operatic Society, Maria in "The Sound of Music" with the Questors Theatre and Madam Dubonnet in "The Boyfriend" at Bramston School.

### ALAN BYWATERS (Mercury)

Alan Bywaters has had an active interest in music since junior school days, and won several certificates for singing. He was also a member of the local church choir. He also learned the guitar and violin but his greatest love was piano which he studied with the London College of Music. Just over two years ago he moved to Witham and joined the Operatic Society. This is his first principal role.

### BRIAN HENDERSON (Bacchus)

Brian was born in Aberdeen (30 years ago??) and went to school at Robert Gordon College. There he sang in the school choir which has a fine reputation in Scotland. His first show with Witham Musical & Amateur Operatic Society was White Horse Inn, and his many hobbies include wine-making which seems appropriate to the part he is playing in this show.

### CATHERINE MOORE (Cupid)

This is Catherine's second show with the society and she is playing her first part. She has belonged previously to Operatic Societies at Southampton, Waltham Forest, Ilford and Colchester. Catherine is married with one child and lives at Tiptree where she is an active member of the Tiptree Dramatic Society.

wedding



commercial industrial

## E. F. COWARD & SONS Ltd.

*Motor & General Engineers*

HATFIELD PEVEREL, ESSEX  
Telephone CHELMSFORD 380332

TOTAL PETROLS  
Oils of Customers' own choice

MORRIS DEALERS

Any make of new car supplied

*Good Secondhand Cars Bought and Sold*



THE WITHAM MUSICAL & AMATEUR  
OPERATIC SOCIETY

AUTUMN PRODUCTION

IOLANTHE

or

THE PEER AND THE PERI

by W. S. Gilbert & Arthur Sullivan

27th October - 1st November 1980

PUBLIC HALL WITHAM

WITHAM DRAMATIC CLUB

AUTUMN PRODUCTION

OH! WHAT A LOVELY WAR

19th-22nd November 1980

PUBLIC HALL WITHAM

**BYFORDS OF WITHAM**



Furniture and furnishings  
by leading British and  
Continental designers and  
manufacturers.

Specialists in curtains and loose covers,  
made in our own workrooms,  
catering for your every need.  
Carpets planned and fitted.

**F. BYFORD & SON, 90 - 92 HIGH ST., WITHAM, ESSEX. Tel. 513386**



SYLVIA



MARIA



CHRIS

**SAVE  
WHERE  
YOU  
SEE  
THESE  
GIRLS**

**Cheshunt**



**BUILDING SOCIETY**

A member of the Building Societies Association

Local Office:

67A NEWLAND STREET, WITHAM

FALCON CROFT  
**Antiques**

25 Maldon Road, Witham  
Tel: Witham 511068

FURNITURE, CHINA, SILVER,  
JEWELLERY, BRIC-A-BRAC

50p to £500

OPEN MONDAY-SATURDAY 9.30a.m.-5.00p.m.

For all your  
property requirements  
throughout  
Essex and Suffolk

**Abbott**



93 HIGH STREET  
WITHAM 512060

AGENTS FOR

**ABBAY  
NATIONAL**

**BUILDING  
SOCIETY**



Chartered Surveyors  
Auctioneers  
Valuers and Estate Agents

**BACKSTAGE**

Stage Manager	...	Audrey King
Assistant Stage Managers	...	Ken Hawkes & Sonya Carter
Properties	...	Sally Bell & Alan Sales
Wardrobe	...	Nesta Hinchliffe
Lighting and Stage Effects	...	Paddy Maris
Prompt	...	Kath Adams
Backstage	...	Colin Ismay, Les King, Derek Hunt Philip Harris, Dave Knight, Joe Farmer
Make-up	...	June Smith

**FRONT OF HOUSE**

Manager	...	John Gunson
Programmes	...	June Locke

**IN REHEARSAL**

Chorus Master	...	Ken Ferris
Accompanist	...	Adrian Diaper
Scenery	...	The Stage Productions Co. Ltd.
Additional Scenery	...	The Society
Costumes	...	S. B. Watts & Co., Manchester

**THE SOCIETY'S GRATEFUL THANKS ARE EXTENDED TO**

EVERYONE who has helped in any way in the presentation of 'Orpheus', and our public for their continued support.

**Security  
for you,  
your family  
and your  
future**



**HAMBRO LIFE**

Britain's largest unit-linked insurance company

CONTACT YOUR LOCAL BRANCH:  
16 Newland Street, Witham (Tel: 511201)

# 200 different Armstrong floors and expert advice at



Many patterns exclusive to the Armstrong Floor Fashion Centre. There are budget floors, luxury floors, cushioned floors, no-polish floors and wide seamless floors with large samples, all beautifully displayed. Plus professional advice on colour coordination and installation by experts.



WICKHAM FLOORING CENTRE  
36 THE STREET  
WICKHAM BISHOP  
ESSEX

High-Class Baker,  
Confectioner  
and  
Pastrycook

E.T. GILBERT

Our Speciality:  
WEDDING & BIRTHDAY  
CAKES  
FRESH CRUSTY BREAD

83 HIGH STREET  
WITHAM  
Tel: 513153

## An Appreciation

*The Committee take this opportunity of thanking:*

The many firms and well-wishers who have so freely allowed PUBLICITY DISPLAYS and space for POSTERS etc.

The old and new advertisers who have supported this Programme and who have contributed to its revenue. We ask you to contact them for all your needs.

The Ladies & Gentlemen who are selling these Programmes, and the Gentlemen who act as Stewards.

The Press for valuable publicity facilities. Braintree Arts Council for their support.

St. John Ambulance volunteers who are in attendance at each performance.

The many visiting societies and others who organise parties.

For all properties loaned or supplied and created. All those who have in any way contributed to the success of the Production.

## An Invitation to YOU

If you would like to become a Vice-President of the Society we shall be very pleased to receive your application. The rate of subscription is £2.00 per annum. Please forward your subscription to the Hon. Membership Secretary whose name and address appears on page 5.

*Brownes*  
HAIRDRESSING

LADIES' AND GENTLEMEN'S

We now offer a full range of  
MAHDEEN  
organic-based hair treatments

40b Newland Street · Witham · Essex  
Telephone: Witham 512509



*Limousines of  
Distinction*


**For  
YOUR  
Wedding**

Also enquiries for Wedding Photography, Wedding Catering from:

*Richards of Witham*  
Chauffeur driven Limousines

78 HIGH STREET, WITHAM Tel: 513114  
97 CHURCH STREET, TIPTREE Tel: 817667

WHY NOT VISIT THE



**White Hart  
Hotel  
Witham**

Tel: 512245  
AA & RAC 2 STAR Egon Ronay Recommended

**\* A LA CARTE RESTAURANT**  
Flambes a speciality  
Table d'Hote Luncheon every day £5.00  
Sunday Lunches, 3-course including roast beef carved at your table, only £5.00

**\* HOT & COLD SNACKS**  
Served every lunchtime in the lounge bar

**THE NEWLAND SUITE**  
Available for Weddings, Dinners, Parties, etc.  
with Private Bar (max 80 persons)  
\* Live music every Wednesday night

## WITHAM MUSICAL AND AMATEUR OPERATIC SOCIETY

Inaugurated 1921

President: Lt. Col. R. L. CLARKE

Hon. Life Members: Miss L. Croxall, Miss K. Richards and H. L. Neal, Esq.

Vice-Presidents:

R. J. Adams, Esq.  
C. Agent, Esq.  
G. Ager, Esq.  
Mrs. K. Amos  
R. M. Balch, Esq.  
Mrs. A. Beaven  
W. W. Beckett, Esq.  
Dr. T. G. Benjamin  
Mrs. D. Bidwell  
F. Bowker, Esq.  
Mrs. S. Carpenter  
P. J. B. Church, Esq.  
B. Clarke, Esq.  
Mr. & Mrs. B. Clouting  
D. Collins, Esq.  
G. H. Coverdale, Esq.  
Miss L. Croxall  
A. L. Cullen, Esq.  
Mrs. F. Dalton  
Dr. J. G. Denholm  
Mr. & Mrs. D. Ely  
Mrs. M. Elsom  
R. G. Enfield, Esq.  
R. L. Everitt, Esq.  
P. C. Evitt, Esq.  
E. M. Fenton, Esq.  
Mr. & Mrs. K. Ferris  
Mrs. D. Gann

Mr. & Mrs. L. Goodey  
E. T. Gilbert, Esq.  
G. R. Gunson, Esq.  
J. E. Gunson, Esq.  
Mrs. Pat Harris  
K. A. Hawkes, Esq.  
P. Hawkes, Esq.  
Mrs. E. Hayes  
S. Hinchliffe, Esq.  
Mrs. J. Holttum  
Mr. & Mrs. K. Hunter  
K. Ibbotson, Esq.  
P. Jarvis, Esq.  
Mr. L. J. King  
M. C. Lager, Esq.  
Mr. & Mrs. R. H. Lee  
V. G. Lewis, Esq.  
Mrs. M. Lowe  
Mr. & Mrs. E. R. Maltby  
Mrs. C. Meek  
R. Munt, Esq.  
Mr. & Mrs. D. G. Munting  
M. R. Murton, Esq.  
Mr. & Mrs. H. L. Neal  
Mrs. G. Nelmes  
C. W. O. Parker, Esq.  
Mrs. M. Parvin  
Mrs. P. O. Player

Mrs. E. C. Pryor  
J. Pullen, Esq.  
F. Raby, Esq.  
P. Ryland, Esq.  
Mrs. F. A. Redman  
J. A. Rew, Esq.  
J. A. Reynolds, Esq.  
Miss K. Richards  
K. S. Richardson, Esq.  
Mrs. P. L. Roberts  
Miss G. E. Rose  
L. B. Rowley, Esq.  
Mrs. H. N. Sadd  
R. C. L. Seldon, Esq.  
Mr. & Mrs. T. J. Sheppard  
N. E. C. Sherwood, Esq.  
Mrs. P. Slugocki  
Mr. & Mrs. P. Sparkhall  
G. A. Sutcliffe, Esq.  
Mrs. L. Taylor-Brown  
Miss J. Thompson  
C. Turner, Esq.  
G. H. Watson, Esq.  
Mrs. O. Williams  
J. Wiltsher, Esq.  
Dr. A. Wood

### OFFICERS OF THE SOCIETY

Hon. Secretary:  
Mrs. A. LOWENHEK,  
"Lassithi",  
7 Sussex Close,  
Boreham,  
Nr. Chelmsford,  
Essex CM3 3ED

Hon. Social Secretary:  
Mrs. N. TAYLOR

Hon. Treasurer:  
Mr. C. AGENT,  
c/o Lloyds Bank Ltd.,  
Witham,  
Essex

Hon. Publicity Manager:  
Mr. N. CLOUGH,  
30 Saxon Drive,  
Witham,  
Essex

Hon. Business Manager:  
Miss K. RICHARDS,  
"Litmans",  
14 Avenue Road,  
Witham,  
Essex

Hon. Auditor:  
Mr. L. GOODEY

### Executive Committee

Hon. Chairman: G. H. Coverdale, Esq.  
Mrs. K. Adams, Mrs. J. Henderson, E. Law, Esq., E. R. Maltby, Esq., Mrs. R. Page, Mrs. K. Stevenson